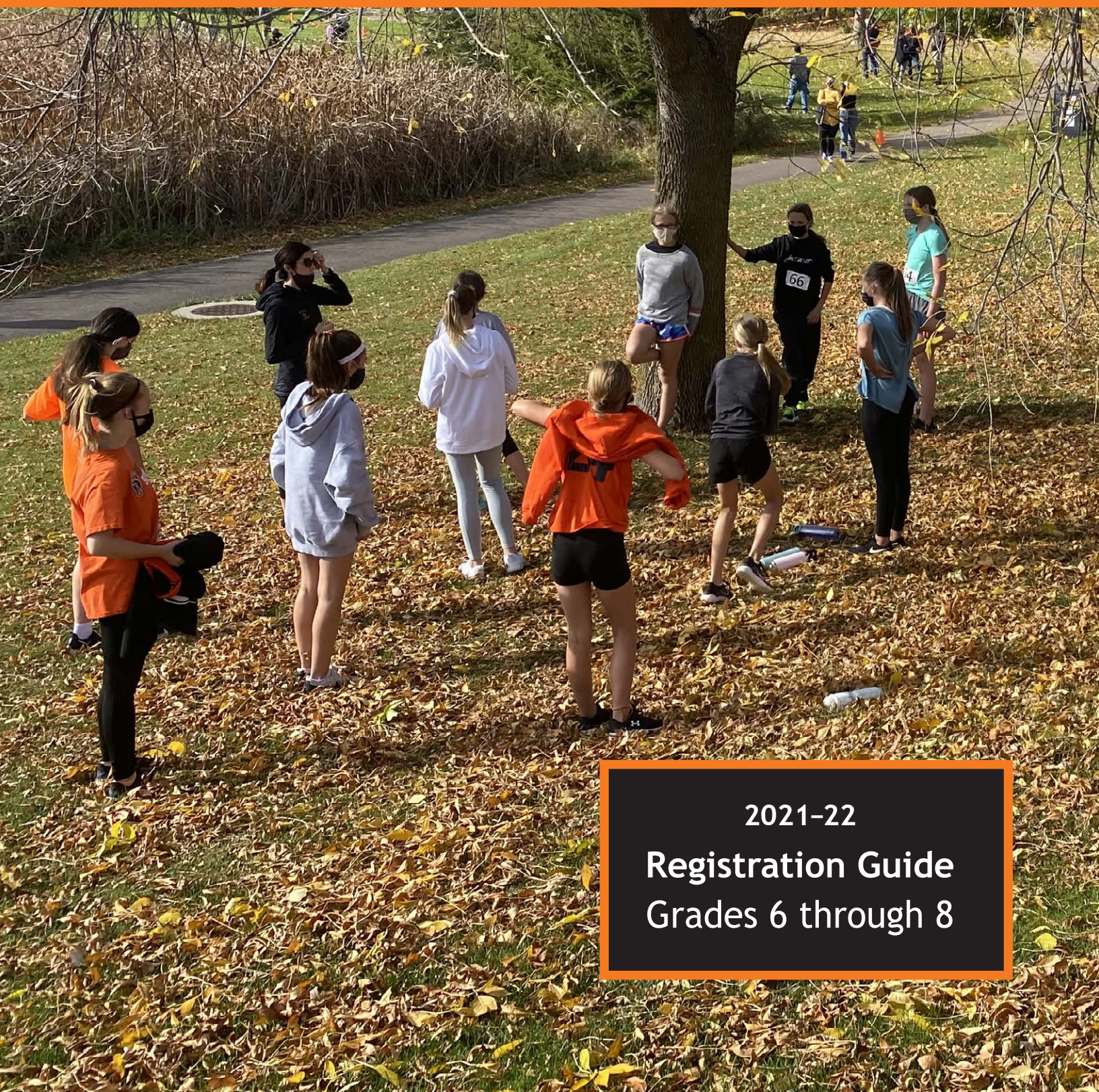




White Bear Lake Area Schools



2021-22

Registration Guide
Grades 6 through 8

Dear White Bear Lake Area Middle School families,

Middle school is an exciting time in White Bear Lake. We offer students the opportunity to explore a variety of classes such as choir, band, orchestra, art, health, FACS, physical education, Project Lead the Way (PLTW) and world language. Students also take core classes including math, language arts, science and social studies. Our goal is for all students to have an enriching and inspiring experience during their years with us. Both Central and Sunrise Park Middle School staff members dedicate themselves to challenging students with engaging curriculum, encouraging them to take pride in their work and stressing the importance of getting involved in the middle school community.

Our most successful students get involved in both academic and extra-curricular programs. These experiences are invaluable. We encourage parents and students to read this registration guide, talk with teachers and use our counselors as resources. Making informed decisions now will help ensure success in the future. We look forward to seeing you in the upcoming school year.

Christina Pierre, Ed. D.
Principal
Sunrise Park Middle School

Cathryn Peterson
Principal
Central Middle School

Table of Contents

Explore Your Options in Middle School	4
Curriculum.....	4
Activities	5
Response to Intervention	5
Keeping Parents Informed	5
PLANNING INFORMATION	
Frequently Asked Questions	6
Secondary Planning Chart	7
High School Program Options Overview	7
COURSE SELECTION	
Grade 6.....	8
Grade 7.....	11
Grade 8	13
English Learner Program	17
World Language	17
ASSISTANCE FOR STUDENTS	
Section 504 Accommodation	18
Special Education	18



LUS CEEB TOOM! Yog koj xav tau daim ntawv no txhais ua lus Hmoob, thov hu rau (651) 407-7623.

ATENCIÓN: Si usted necesita hablar con una persona que hable Español, por favor, llame al (651) 407-7625.

Please note: Many of the photographs used throughout this publication were taken before the COVID-19 pandemic.



Contact Information

CENTRAL MIDDLE SCHOOL	PHONE NUMBER	E-MAIL ADDRESS
General Information	651-653-2888	
Cathryn Peterson, Principal	651-653-2886	cathryn.peterson@isd624.org
Bob Brewer, Associate Principal	651-653-2890	bob.brewer@isd624.org
Amber Walsh, Dean of Students	651-407-7604	amber.walsh@isd624.org
Karen Schmitz, Counselor	651-653-2883	karen.schmitz@isd624.org
Jill Bristow, Counselor	651-407-7659	jill.bristow@isd624.org
Calli Moreau, Counselor	651-653-2882	calli.moreau@isd624.org
Erika Kelly-Kennedy, School Psychologist	651-653-2739	erika.kelly-kennedy@isd624.org
SUNRISE PARK MIDDLE SCHOOL	PHONE NUMBER	E-MAIL ADDRESS
General Information	651-653-2700	
Christina Pierre, Principal	651-653-2743	christina.pierre@isd624.org
Matt Menier, Associate Principal	651-653-2709	matt.menier@isd624.org
Dr. Hala Asamarai, Dean of Students	651-653-2708	hala.asamarai@isd624.org
Tom Mitchell, Counselor	651-653-2724	thomas.mitchell@isd624.org
Sarah Fuhrman, Social Worker	651-653-2710	sarah.fuhrman@isd624.org
Janeen Kuemmel, Social Worker	651-653-2711	janeen.kuemmel@isd624.org
Stephanie Tollison, Psychologist	651-653-2712	stephanie.tollison@isd624.org

Welcome to Middle School

Middle school is a time of great excitement, growth, and discovery. Students look forward to middle school because it means they are growing up and gaining independence. At the same time, the transition to middle school can be daunting. Students may be apprehensive about meeting new people, getting lost in a larger school building, or having a hard time with locker combinations. We work hard to make sure that your child feels at home in a safe, comfortable learning environment when they join our schools.

HELPING ALL STUDENTS SUCCEED

- English Learner (EL) programs are available for students who are learning English.
- Special Education services are available for students with special needs.
- Before and after school programs are available for students who need help with homework or with understanding their coursework.
- Support groups are available to meet the social, emotional, and academic needs of students.

Explore Your Options

CURRICULUM

- The middle school curriculum is designed to meet the interests and abilities of students. It is a rigorous curriculum with high standards designed to meet the unique needs of each individual student.
- A variety of elective classes are available: Art, Health, FACS (Family and Consumer Science), Tech Ed, Band, Orchestra, Choir, Phy Ed, World Language, etc.
- Test scores and teacher recommendations are used to place students into 6th grade mathematics courses that are appropriate for their individual achievement levels.
- Six levels of math are available, including Algebra, Geometry, and Algebra II.
- Students who need more help in basic skills may be assigned an additional math or reading course.
- Enriched classes are available in Math for grade 6, and Math and Social Studies for grades 7 and 8. All students may choose to enroll in enriched courses. Successful students will typically have advanced standardized test scores. More specific information about MAP test scores are noted in the course descriptions.
- PLTW (Project Lead the Way) Gateway To Technology (GTT) is a middle school program designed to help students explore math, science, and technology. PLTW is an activities, project, and problem-based learning program designed to challenge and engage the natural curiosity of middle school students. Students who continue on with PLTW at the high school are able to earn college credit.



HOME BASE/ADVISORY

- Students meet daily with a teacher who is their advisor. A variety of activities are planned during this period.
- Teachers monitor students' academic progress and may check student planners.
- Students have time for reading, math, games, academic enrichment activities and career exploration.
- Students experience lessons focused on social and emotional learning.

ACTIVITIES

Middle school students are encouraged to get involved in activities outside the school day. This is a great time to try out a new sport, club, or hobby.

- Students can work on volunteering and leadership by participating in student council, service club, or the WEB (Where Everybody Belongs) mentoring program.
- A variety of athletic programs are offered through the District's community education program including cross country, tennis, volleyball, football, wrestling, and track and field.
- White Bear Lake Area Schools have a strong archery club program that has been successful at the state and national level.
- Students are invited to participate in extra-curricular activities such as jazz band, art club, or the musical.
- Future journalists and photographers can work with the yearbook or newspaper.
- Students compete with other middle schools through the math team and various class-related competitions such as geography bee and history day.
- Throughout the year, after-school groups meet for chess club, scrapbooking, Xbox tournaments, gym rats, rocket club, and book club.

RESPONSE TO INTERVENTION

The White Bear Lake middle schools strive to provide support for students across the continuum of learning. One such example of these student-specific supports are the science, math, and reading intervention classes offered as a part of our Response to Intervention (RtI) framework. These small group courses are offered across all grade levels six through eight, either as a replacement for a regular class or as an additional course that takes the place of an elective course. Participation in courses is by invitation only; the RtI lead and/or school counselors will contact the families of students who meet the entrance criteria for these classes.



KEEPING PARENTS INFORMED

Parents are an integral part of the formula for student success. In order to work as a team, every effort is made to provide parents with timely, accurate information.

- Each school has a website that provides updates on important information including calendars of upcoming events and activities.
- Principals and teachers utilize the "SchoolMessenger" system for automated phone calls to parents about major school issues, upcoming events, and unique opportunities for parents and students.
- Most middle school students carry a planner that helps them keep track of important dates and school work.
- Secondary schools use a web-based Skyward "Family Access" program to provide students and parents with up to the minute information about upcoming homework, grades, attendance, and discipline.
- Schoology is a learning management system and social network that makes it easy to create and share academic content. The Schoology system gives instructors, students, and parents free access to manage classes, grades, assignments and more.
- Google Classroom is an organization tool for teachers and students. Teachers may use Google Classroom to assign and distribute online assignments that use Google Docs. Parents are invited to sign up for guardian summaries.



Planning Information

Frequently Asked Questions

GENERAL QUESTIONS

Can I change my music, world language, or electives during the year?

Students are expected to stay with their choices for the entire school year.

What classes will I have?

Students will take Language Arts, Social Studies, Math, and Science. Students also take elective courses, which include FACS (Family and Consumer Science), Physical Education, Health, Technology Education, Band, Orchestra, Choir, Art, and World Languages.



Why do we have to make selections beyond our top requests?

We have students rank their requests in case there are conflicts with their individual schedules. In the majority of cases, students do receive their top choices. Sometimes we may need to use alternate choices when specific demands on a student's schedule are made. In some cases, a course may not be offered if enrollment is low, and an alternate request will take its place on a student's schedule.

I did not take band or orchestra in 6th or 7th grade, may I take it for the following year?

Anyone is welcome to sign-up for 7th grade band, even if you did not take band in 6th grade! Likewise, anyone is welcome to sign-up for 6th grade orchestra, even if you did not take orchestra in 5th grade. Both 8th grade band and 8th grade orchestra, as well as 7th grade orchestra, require you to have taken the class the previous year or have previous experience/instructor permission.

What are enriched classes and how are students placed?

Enriched classes use an accelerated curriculum. Students are placed into advanced math classes using a variety of data, including test scores, grades, and teacher recommendations. Students are able to choose enriched Social Studies in seventh and eighth grade.

*Leading minds to learning,
hearts to compassion,
and lives to community service.*



Planning Information

Secondary Planning Chart

GRADE 6	GRADE 7	GRADE 8
Language Arts	Language Arts	Language Arts
Math	Math	Math
Physical Science	Life Science	Earth Science
Minnesota History	U.S. History	Geography
Phy Ed, Music	Phy Ed, Art or Music	Phy Ed, Art or Music
Literacy, Art, Design & Modeling	Literacy, Health	World Language or FACS, Manufacturing Ed., Automation & Robotics, or Visual Media Art and Design 8
GRADE 9	GRADE 10	GRADE 11
Language Arts	Language Arts	Language Arts
Math	Math	Math
Science	Science	Science
Phy Ed/Health, Geography	US History	World History
Two Electives	Two Electives	Two Electives
GRADE 12	<i>* Students must take at least 1/2 credit in the Arts and an additional 1/2 credit in Health, Phy Ed or the Arts during grades 9-12.</i>	
Language Arts		
Government/Economics, Phy Ed/Health, Elective		

Programs Available in White Bear Lake Area High School

PROGRAM	EXPLANATION	ADVANTAGES	CONSIDERATIONS
AP (Advanced Placement)	<ul style="list-style-type: none"> College curriculum Rigorous Nationally recognized 	<ul style="list-style-type: none"> May receive college credit Develops higher-level thinking skills Weighted GPA 	<ul style="list-style-type: none"> Must take AP exam to receive college credit Above average ability in reading, writing and math
CIS (College in the Schools)	<ul style="list-style-type: none"> U of M college curriculum Challenging Grades 11-12 	<ul style="list-style-type: none"> May receive college credit at the U of M Weighted GPA 	<ul style="list-style-type: none"> Top 20 percent of class recommended Must receive C or higher to get college credit
H (Honors)	<ul style="list-style-type: none"> Faster paced More in-depth Grades 9 through 12 	<ul style="list-style-type: none"> Good preparation for college/university study 	<ul style="list-style-type: none"> Rigorous Requires more work
CLEP (College Level Examination Program)	<ul style="list-style-type: none"> Take tests at university CLEP Centers Earn college credit by passing test 	<ul style="list-style-type: none"> Saves time when you get to college Allows student to skip general level courses Saves money at college 	<ul style="list-style-type: none"> Test fee is approximately \$70 Not all universities accept the credit
PLTW (Project Lead The Way)	<ul style="list-style-type: none"> Rigorous Nationally recognized 	<ul style="list-style-type: none"> College credits Good preparation for college Weighted GPA 	<ul style="list-style-type: none"> Requires more work Rigorous
Vo-Tech (NE Metro Vo-Tech)	<ul style="list-style-type: none"> Vocational programming at Century College through Intermediate District 916 Offers Vo-Tech programs not offered at most high schools Available to juniors and seniors 	<ul style="list-style-type: none"> Explore career options Courses offered on college campus 	<ul style="list-style-type: none"> Bus transportation required from WBLAHS - South Campus Takes two periods of school day

Course Selection Index

alphabetized subjects	page
Arts (Art & Music), Grade 6	8
Arts (Art & Music), Grade 7	11
Arts (Art & Music), Grade 8	14
AVID, Grade 6	8
AVID, Grade 7	11
AVID, Grade 8	14
English Learner Program, Grades 6-8	17
Family & Consumer Science (FACS) 8	15
Language Arts, Grade 6	9
Language Arts, Grade 7	12
Language Arts, Grade 8	15
Mathematics, Grade 6	9
Mathematics, Grade 7	12
Mathematics, Grade 8	15
Physical Education, Grade 6	10
Physical & Health Education, Grade 7	12
Physical Education, Grade 8	15
Science, Grade 6	10
Science, Grade 7	13
Science, Grade 8	16
Social Studies, Grade 6	10
Social Studies, Grade 7	13
Social Studies, Grade 8	16
Technology Education, Grade 6	10
Technology Education, Grade 8	16
World Language, Grade 8	17

Course Selection

by grade level

GRADE 6

ADVANCEMENT VIA INDIVIDUAL DETERMINATION (AVID)

AVID 6 (year)

Advancement Via Individual Determination (AVID) is an elective course for students in the academic middle who have the desire and determination to prepare for admission to four-year colleges and universities. The elective class provides students with the academic and motivational support to succeed in rigorous courses. The AVID curriculum teaches higher-level reading, writing, organizational and study skills. Two days per week in AVID class, students are coached by trained college tutors, and work collaboratively in groups with curriculum focused on writing and inquiry. The course also includes motivational presentations by guest speakers and field trips to college campuses.

ARTS

Art 6 (semester - every other day)

Start a beginner, leave an artist! This intro course focuses on the elements of art, which are the building blocks for all art production. The format of this class allows you to learn a variety of art basics and materials, some examples may include still life painting, contour drawing, found object sculptures, collage, clay pinch pots and more! This class will teach you the secret to being able to draw anything using tricks to jump start the creative part of your brain. The class includes a variety of activities including group work, games and experimentation with different materials and projects.

Band 6 (year - every other day - elective)

Playing a band instrument and being a part of the WBL band program can be a fun and rewarding experience that has many long-term benefits. This is a beginning band and no instrumental music experience is necessary or required. After selecting a band instrument with teacher guidance, students learn the basics about their specific instrument technique and reading music. Families of students who register for band will receive more information in the fall about instrument selection and rental. Scholarship instruments are available at no cost for families who qualify for free/reduced lunch.

Choir 6 (year - every other day - elective)

Choir students learn and practice healthy vocal techniques, including proper use of breath and care of the voice. Members of the choir also practice good musicianship including self-discipline, reading music, development of sight-singing skills and correct concert behavior as performer and listener. Students apply these skills while learning and preparing a variety of musical styles from many cultures. Participation in choir requires two or three evening performances throughout the school year.



Music Enrichment 6

(year - every other day - elective)

This course will focus on studying the elements of music (melody, harmony, dynamics, tone color, tempo, pitch, rhythm, texture, duration and form). These elements will be applied in analyzing music, composers, and cultural backgrounds. This course will also include the study of various musical styles and music history.

Orchestra 6

(year - every other day - elective)

Orchestra is another way for students to learn a musical instrument. Participation in sixth grade orchestra involves a full group rehearsal every other day, a small group lesson once every six to eight school days, consistent practice time at home each week and participation in two or three evening concerts throughout the school year.

ENGLISH LEARNER (EL) PROGRAM

See page 17.

LANGUAGE ARTS

Language Arts 6 (year)

(Scheduled as a full class period every day plus an additional class period, every other day)

Literature, writing, speaking, and listening skills are developed over the course of this class. The content of the course focuses on fiction and nonfiction reading skills and strategies, as well as vocabulary building and comprehension skills. Students are required to read independently on a daily basis. Writing requirements for sixth grade include a response to literature, descriptive writing, poetry, and oral presentations. Students also work on spelling, grammar, capitalization, and punctuation skills.

MATHEMATICS

Advanced Math 6

(invitation only, year)

Students will investigate and explore fraction operation, two- and three-dimensional measurement, rational numbers, similarity, proportional reasoning, rate, ratio and percent, integers, exponents, variables, equations, linear relationships, and probability. Emphasis will be placed on learning algebra and geometry topics using graphs, tables, equations, and written explanations. Students who complete Advanced Math 6 will take Algebra I in 7th grade.

Algebra I (Advanced Math)

Grade 6 (invitation only, year)

This course will focus on high-level algebraic concepts while working with real data, real-life situations and real-world applications. Topics include statistics, proportional reasoning, linear relationships, systems of equations and inequalities, exponential relationships, functions, and quadratic relationships. Students who complete Algebra I will take Geometry in 7th grade.

Math 6 (year)

During the year students will investigate and explore the following topics: number theory, data analysis, two- and three-dimensional geometry, ratios, proportions, integers, rational numbers (including fractions, decimals and percents), and probability. Emphasis will be placed on communicating mathematically using graphs, tables, formulas, calculations, and written explanations. Students who complete Math 6 will take Math 7 in 7th grade.

PHYSICAL EDUCATION

Physical Education 6

(year - every other day)

Physical education for sixth grade students consists of individual activities, rhythms/dance, group/team activities, and outdoor educational activities. Health-related physical fitness and wellness activities are promoted and supported throughout the curriculum.

SCIENCE

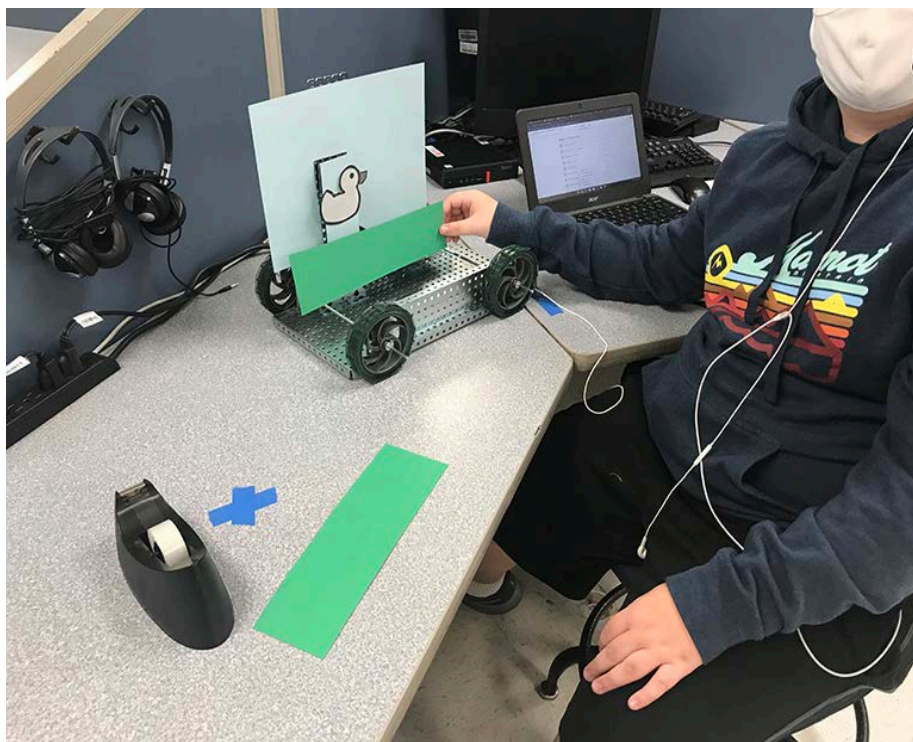
Science 6: Physical Science (year)

In this course, students will be introduced to the scientific process, science laboratory equipment, and metric measurement. Students will learn about properties of matter, magnetism, static electricity, force and motion, properties of light and sound, and energy transformations. The engineering process will be introduced throughout these units of study.

SOCIAL STUDIES

Minnesota History 6 (year)

In this year-long required course, students will study Minnesota History using the Northern Lights textbook and a variety of other primary and secondary sources. This course covers Minnesota history from its earliest inhabitants to present-day Minnesota. This course has been designed to capture the interests of middle school students by relating the stories of Minnesotans from past and present. Embedded in this course are the other disciplines in social studies, including civics, economics and geography. Students taking this course will learn that history is the process of uncovering and interpreting evidence. They will examine historical documents of all types and learn to compare and analyze data from maps, images, and text.



TECHNOLOGY EDUCATION

The Gateway To Technology® (GTT) cutting-edge program is part of the nationally adopted *Project Lead the Way* (PLTW) curriculum. This program addresses the interest and energy of middle school students, while incorporating national standards in mathematics, science, and technology. GTT is “activity oriented” to show students how technology is used in engineering to solve everyday problems in units of study. There are currently five instructional units that excite and motivate students to use their imaginations and teach them to be creative and innovative, while gaining the skills they need to develop, produce, and use products and services. White Bear Lake schools were recognized as a PLTW school of excellence by the State of Minnesota.

Design and Modeling I

(semester - every other day)

Students will design and create projects such as sailboats, dragsters, and magnetic levitation vehicles. Each student will become familiar with the computer software program *Autodesk Inventor* and will learn basic CAD (computer aided drawing) skills and experience how we use engineering skills to solve everyday problems. This is a rigorous curriculum that incorporates national STEM (Science, Technology, Engineering, and Math) standards into our technology class-room. Students will be required to demonstrate their abilities to use computer programs such as Microsoft Word and PowerPoint. Basic skills in page formatting, spread sheets, layering, copying, pasting and networking will also be covered during the quarter.



GRADE 7

ADVANCEMENT VIA INDIVIDUAL DETERMINATION (AVID)

AVID 7 (year)

Advancement Via Individual Determination (AVID) is an elective course for students in the academic middle who have the desire and determination to prepare for admission to four-year colleges and universities. The elective class provides students with the academic and motivational support to succeed in rigorous courses. The AVID curriculum teaches higher-level reading, writing, organizational and study skills. Two days per week in AVID class, students are coached by trained college tutors, and work collaboratively in groups with curriculum focused on writing and inquiry. The course also includes motivational presentations by guest speakers and field trips to college campuses.

ARTS

Art 7 (elective, year - every other day)

What is the truth behind Vincent Van Gogh's ear? Did Frida Kahlo really have a unibrow? What was art's impact during World War II and the Holocaust? Art has many different types and styles and in this course you will get a taste of everything. Some projects we may do in 7th grade include: paper mache masks, printmaking, realistic drawing, abstract painting, clay grotesque faces, and photography. In addition to projects, we will explore the interesting and sometimes controversial lives of artists through group work, fun practice projects, games, debating about art topics and other engaging activities.



Band 7

(elective, year - every other day)

Participation in seventh grade band involves a full group rehearsal every other day, a small group lesson once every six to eight school days, consistent practice time at home each week and participation in two or three evening concerts throughout the school year.

Choir 7

(elective, year - every other day)

Choir students learn and practice healthy vocal techniques including proper use of breath and care of the voice. Members of the choir also practice good musicianship including self-discipline, reading music, development of sight-singing skills and correct concert behavior as performer and listener. Students apply these skills while learning and preparing a variety of musical styles from many cultures. Participation in choir requires two or three evening performances throughout the school year.

Orchestra 7

(elective, year - every other day)

Orchestra is another way for students to learn a musical instrument. Participation in seventh grade orchestra involves a full group rehearsal every other day, a small group lesson once every six to eight school days, consistent practice time at home each week and participation in two or three evening concerts throughout the school year. Students must have previous orchestra experience or receive permission from the music department before registering.

ENGLISH LEARNER (EL) PROGRAM

See page 15.



LANGUAGE ARTS

Language Arts 7 (year)

(This course will be scheduled as a full class period every day plus an additional class period, every other day)

This course further develops reading, writing, and speaking skills. Reading strategies include: topic, main idea, supporting details, fact and opinion, inferences and drawing conclusions, author's purpose, point of view, and word study. Units in this course use literature as a way to make connections with American history. Students are required to read independently on a daily basis. In addition to reading, students will enhance their writing skills through essays. The writing curriculum requires students to complete various pieces of writing including a large scale research project.

MATHEMATICS

Algebra I (Advanced Math) Grade 7 (year)

This course will focus on high-level algebraic concepts while working with real data, real-life situations and real-world applications. Topics include statistics, proportional reasoning, linear relationships, systems of equations and inequalities, exponential relationships, functions, and quadratic relationships. Students that complete Algebra I will take Geometry in 8th grade.

Geometry (Advanced Math) Grade 7 (year)

Prerequisite: Algebra I

Emphasis in this course is on developing a strong understanding of geometry through hands on exploration and the use of technology. Topics include reasoning in geometry, using tools of geometry, triangle properties, polygon properties, circle properties, transformations and tessellations, area, volume, Pythagorean Theorem, right triangle trigonometry, similarity, congruence, and proof. Students that complete Geometry will take Algebra II in 8th grade.

Math 7 (year)

During the year, students will investigate and explore rational numbers, similarity, proportional reasoning, rates, ratios, percents, integers, exponents, variables, surface area and volume, linear relationships, and probability. Emphasis will be placed on communicating mathematically using graphs, tables, formulas, and written explanations. Students that complete Math 7 will take Math 8/Algebra I in 8th grade.





PHYSICAL AND HEALTH EDUCATION

Personal Health 7 (year - every day)

Health education teaches about physical, mental, emotional, and social health. This course motivates students to improve and maintain their health, prevent disease, and reduce risky behaviors. Students will examine the influence of family, peers, and media on health decisions and behaviors. Students will set goals to enhance health, utilize resources to access valid health information, learn strategies to communicate effectively to manage stress and conflict. In addition, students will learn how to advocate for personal health and the health of others.

Physical Education 7 (year - every other day)

Physical education for seventh grade consists of individual/dual activities, rhythms/dance, group/team activities, and outdoor educational activities. Health-related physical fitness and wellness are promoted and supported throughout the curriculum.

SCIENCE

Life Science 7 (year)

In this course, students will continue to use the scientific process, the engineering process, metric measurement, and science laboratory equipment. Students will continue their exploration of matter and will learn about cells, animals, human anatomy, genetics, disease, and ecology. Students will have additional projects and be given additional opportunities for furthering their science knowledge in conjunction with the science curriculum.

Notice: Many of the photographs used throughout this publication were taken before the COVID-19 pandemic.



SOCIAL STUDIES

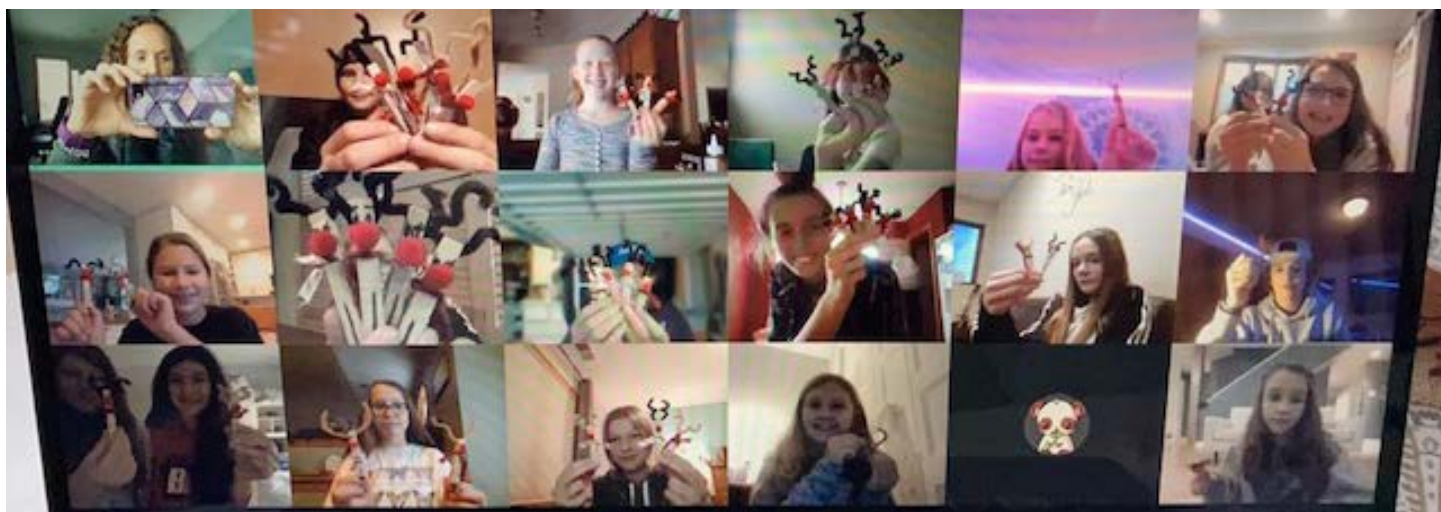
Enriched U.S. History 7 (year)

In addition to the curriculum requirements of U.S. History 7, students who choose to take this advanced course will work at a faster pace, do more research, critical thinking, and will be required to actively participate in rich classroom discussion. There will be more essay writing, research projects, and involvement in academic competitions such as National History Day.

U.S. History 7 (year)

This course explores topics from 1800 through the early 2000's. Students will explore a wide range of historical documents, images, maps, and text. A key component of this course is critical thinking and analysis. Students will expand their knowledge base, build critical thinking and processing skills, internalize beliefs/values, and build awareness of social participation while living in a democratic republic. Students will extend their knowledge and skills by participating in National History Day.





ADVANCEMENT VIA INDIVIDUAL DETERMINATION (AVID)

AVID 8 (year)

Advancement Via Individual Determination (AVID) is an elective course for students in the academic middle who have the desire and determination to prepare for admission to four-year colleges and universities. The elective class provides students with the academic and motivational support to succeed in rigorous courses. The AVID curriculum teaches higher-level reading, writing, organizational and study skills. Two days per week in AVID class, students are coached by trained college tutors and work collaboratively in groups with curriculum focused on writing and inquiry. The course also includes motivational presentations by guest speakers and field trips to college campuses.

ARTS

Art 8

(elective, year - every other day)

From beginner to advanced, expand your art skills with this class! You will continue to grow as an artist with even more opportunity to express yourself. Study how the masters represented their identity, self expression and creativity; then apply what you learned using advanced art materials. You will improve your realistic drawing skills, collaborate with younger students while learning the art of cartooning, create sculptures from real life, and show your expressive side. Learn how the materials you use and the subject of your artwork work together to make incredible art and leave this class with vibrant paintings, drawings, and so much more!

Visual Media Art and Design 8

(year - every other day)

Is it a great photo... or was it edited using Photoshop? If you are ready to combine your interest in art with technology, move into the 21st century with this class! You will be plugged into the latest digital media technology using various apps and programs to create amazing digital artwork including graphic design, web design, digital photo editing, movie making, and more. Interested in a career in the arts? This class is for you!

Band 8

(elective, year - every other day)

Participation in eighth grade band involves a full group rehearsal every other day, a small group lesson every six to eight school days, consistent practice time at home each week and participation in two or three evening concerts throughout the year. Students must have previous band experience or receive permission from a band instructor.

Orchestra 8

(elective, year - every other day)

Orchestra is another way for students to learn a musical instrument. Participation in seventh grade orchestra involves a full group rehearsal every other day, a small group lesson once every six to eight school days, consistent practice time at home each week and participation in two or three evening concerts throughout the school year. Students must have previous orchestra experience or receive permission from the music department before registering.

Choir 8

(elective, year - every other day)

Choir students learn and practice healthy vocal techniques, including proper use of breath and care of the voice. Members of the choir also practice good musicianship including self-discipline, reading music, development of sight-singing skills and correct concert behavior as performer and listener. Students apply these skills while learning and preparing a variety of musical styles from many cultures. Participation in choir requires two or three evening performances throughout the school year.



ENGLISH LEARNER (EL) PROGRAM

See page 17.

FAMILY & CONSUMER SCIENCE (FACS)

FACS 8

(elective, year - every other day)

This course gives students the opportunity to explore all things FACS! Students will learn basic culinary skills, cooking techniques, and nutrition through a variety of food labs and food science experiments. Students will explore the world of design by creating aesthetically pleasing sewing projects that use the principles and elements of design. 8th Grade FACS will also teach students how to be career ready by covering resume writing, filling out job applications, and practicing the interview process. If you're looking for a project-based class that can prepare you for future success - 8th Grade FACS is for you!

LANGUAGE ARTS

Language Arts 8 (year)

This course concentrates on reading, speaking, writing, and critical thinking. Students accomplish this through the use of analyzing and evaluating and discussion. Students will apply advanced skills in analysis. Students will also be expected to read and write above grade level. In addition, students can expect an increased workload in reading and writing through rigorous coursework.

MATHEMATICS

Algebra II (Advanced Math) Grade 8 (year)

Prerequisite: Geometry

This course will focus on high-level algebraic concepts while working with real-life situations and real-world applications. Topics include: describing data, linear models and systems, functions and transformation, exponential functions, power functions, logarithmic functions, matrices, quadratic functions, rational functions, applications of probability and statistics.

*Leading minds to learning,
hearts to compassion,
and lives to
community service.*



Geometry (Advanced Math) Grade 8 (year)

Prerequisite: Algebra I

Emphasis in this course is on developing a strong understanding of geometry through hands on exploration and the use of technology. Topics include reasoning in geometry, using tools of geometry, triangle properties, polygon properties, circle properties, transformations and tessellations, area, volume, Pythagorean Theorem, right triangle trigonometry, similarity, congruence, and proof.

Math/Algebra 8 (year)

Students will investigate and explore an introduction to functions, scientific notation, Pythagorean Theorem, irrational numbers, linear relationships, exponential relationships, quadratic relationships, systems of equations, solving equations, and algebraic properties. Emphasis will be placed on communicating mathematically using algebra through graphs, tables, equations, and written explanations.



PHYSICAL EDUCATION

Physical Education 8

(year - every other day)

Physical education for eighth grade consists of individual/dual activities, rhythms/dance, group/team activities, and outdoor educational activities. Health-related physical fitness and wellness are promoted and supported throughout the curriculum.

SCIENCE

Earth Science 8 (year)

Students will continue to use the scientific process, the engineering process, metric measurement and science laboratory equipment. Students will continue their exploration of matter and learn about rocks, minerals, landforms, erosion, plate tectonics, weather, environmental concerns, and space. Students will have additional projects and be given additional opportunities for furthering their science knowledge in conjunction with the science curriculum.

SOCIAL STUDIES

Enriched World Geography 8 (year)

In addition to the World Geography 8 curriculum, students study global current event articles and perform additional research projects. There will be in-depth student work comparing the geographic, cultural, and political structures around the world. Students who choose this course will work at a faster pace and will be expected to actively participate in rich classroom discussion.

World Geography 8 (year)

This course presents the interdisciplinary approach, relating physical geography to the economic, political, social, historical, and cultural aspects of human activity. Every cultural region of the world is studied with an emphasis on global awareness, interdependence, change, and the need for cooperation among people of all nations. Students will develop skills in map reading, map making, and the collection and analysis of factual information. Global current events are introduced which will enlarge the students' knowledge and awareness as well as set the foundation for future reading, study, and investigation.



TECHNOLOGY EDUCATION

The Gateway To Technology® (GTT) cutting-edge program is part of the nationally adopted *Project Lead the Way* (PLTW) curriculum. This program addresses the interest and energy of middle school students while incorporating national standards in mathematics, science, and technology. GTT is “activity oriented” to show students how technology is used in engineering to solve everyday problems in units of study. There are currently five instructional units that excite and motivate students to use their imaginations and teach them to be creative and innovative, while gaining the skills they need to develop, produce, and use products and services. White Bear Lake schools were recognized as a PLTW school of excellence by the State of Minnesota.

Automation and Robotics 8

(elective, year - every other day)

In this exciting curriculum, students trace the history and development of automation and robotics. Today's robotics increase factory and manufacturing capabilities, assist in public safety and surveillance, plus play a vital role in the military and medical fields. Each student will study a specific area of interest and develop a presentation to share with others. They also learn about structures, energy transfer, machine automation, and computer control systems. Beginning programming using an icon based system will be introduced with each student required to write and produce a working automated program of their own creation. Students acquire knowledge and skills in engineering problem solving and explore requirements for careers in engineering. This Project Lead the Way (PLTW) curriculum can be continued at the high school with the Introduction to Engineering and Design course.



Manufacturing Education 8

(elective, year - every other day)

The curriculum will provide each student with the opportunity to experience and explore the manufacturing processes that surround us in our everyday lives. This is a “hands on” class that will look at the processes used in the woods, metals, and plastics industries. Concepts in the material sciences, such as chemical bonding and thermoforming will be explored making this more than a “hobby class”. Project work will allow students to study measuring, use both hand and power tools, look at natural resources and study the growing area of synthetics. Applied mathematics, machine safety, and career occupations will be explored. Newer technologies like 3D printing, CNC (Computer Numeric Control) machining, and laser engraving are being implemented in the course work to meet the state and national standards concerning Science, Technology, Engineering, and Math (STEM).

WORLD LANGUAGE

(Grade 8, elective, year)

Level I - Students will begin to understand, speak, read and write in a world language. Students will also become acquainted with the cultures of people in countries where the language is spoken. Current middle school language offerings include: French, German and Spanish.

¿PUEDO TOMAR AGUA?	Can I get a drink of water?
¿PUEDO IR A MI CASILLERO?	Can I go to my locker?
POR FAVOR	Please
GRACIAS	Thank you

ENGLISH LEARNER (EL) PROGRAM

Grades 6-8

Students whose primary language is not standard American English and who are found to be in need of support will receive English Learner Program services to assist them in the acquisition of the English language. The level of service will be determined by the proficiency level of the student. Courses include:

- **EL Reading** for students who need support in addition to their grade-level Language Arts class.
- **EL Resource** for students who need support in comprehending the demands of their content area classes.
- These classes will be individually scheduled by the English Learner teacher.



Assistance for Students

Section 504 Accommodation / Special Education

SECTION 504 ACCOMMODATION

A student may be eligible for a Section 504 Accommodation Plan if a multidisciplinary team has determined the student has “a substantial limitation in a major life activity”. The 504 Accommodation Plan will describe accommodations which the team, inclusive of parents, has determined to be necessary to allow the student to access instruction. The 504 Accommodations may include, but are not limited to, adapted assignments, untimed tests, adaptive equipment, assigned seating or an adjusted schedule.

Students who are placed on a 504 Accommodation Plan will participate in the state and local assessment of academic standards.

For more information, please call Lisa Ouren, Director of Special Services (651-407-7553).

SPECIAL EDUCATION

A continuum of special education services is available for students who have a disability as defined by criteria established by the Minnesota Department of Education and who demonstrate the need for special education and related services.

A special education case manager will team with parents, general education teachers and an administrative representative in developing an Individual Education Plan (IEP). The IEP will address the student’s progress in the general education curriculum. Progress toward IEP goals will be reviewed and revised annually by the IEP team. The plan will describe the student’s participation in the Minnesota Comprehensive Assessment (MCA) testing and other district-wide testing as well as the special education and related services the student needs.

During or before ninth grade, students will participate in an evaluation of skills necessary for transition to adult life. The student’s IEP will begin to focus on the transition needs of the student. Transition IEPs begin to focus on such things as employment, post-secondary education, and independent living.

For more information, please call:

- Lisa Ouren, Director of Special Services, 651-407-7553
- Dave Thomas, Student Support Services Coordinator - Central 651-407-7593, david.thomas@isd624.org
- Katy Domschot, Student Support Services Coordinator - Sunrise 651-407-7557, kathleen.domschot@isd624.org



www.isd624.org

